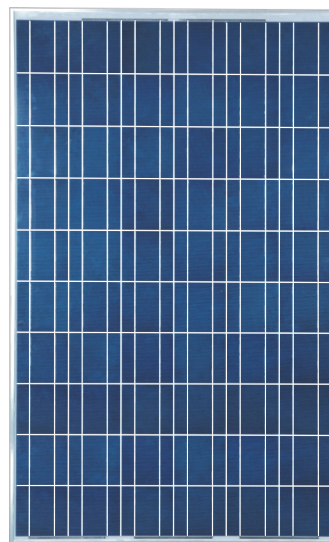


CS6P-170/180/190/200

e-Module

CS6P e-Module series is a medium-powered module product ideal for roof top or ground mounted off-grid and on-grid solar power systems where long term economics (ROI), reliability and environmental issues are of a real concern.

CS6P e-Modules have gone through rigorous in-house reliability tests to guarantee its performance.



KEY FEATURES

- 60 polycrystalline solar cells
- Unique frame design to reinforce sealing and to prevent freezing and warping
- Strong aluminum frames to strengthen the load hold and to stand against high wind
- Special mounting holes on the frames for long and short side mounting
- High transparency low iron tempered glass with enhanced stiffness and impact resistance
- Advanced EVA encapsulation system with multilayer backsheets to better protect modules

APPLICATIONS

- On and off-grid solar power stations
- Commercial / industrial building roof-top systems
- Residential roof-top systems
- Other industrial and commercial applications

CERTIFICATIONS

- UL1703, IEC61215 (Being certified), IEC61730 (Being certified)
- ISO 9001:2000, ISO/TS 16949:2002,

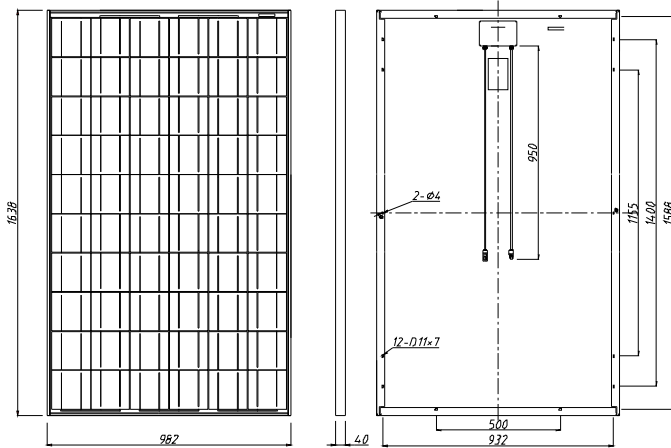


LIMITED WARRANTY

- 25 years limited warranty on power output
90% power output assurance for 10 years, and 80% power output assurance for 25 years.
Please refer to warranty statement for warranty conditions in detail.

CS6P-170/180/190/200 e-Module

Mechanical Specifications



Dimensions		
Length*Width*Depth	mm	1638 x 982 x 40
	(in)	(64.5 x 38.7 x 1.6)
Weight	kg (lbs)	18.5 (40.8)

Cells	
Cell Material	Polycrystalline
Number of Cells	60

Electrical Characteristics

Electrical Performance

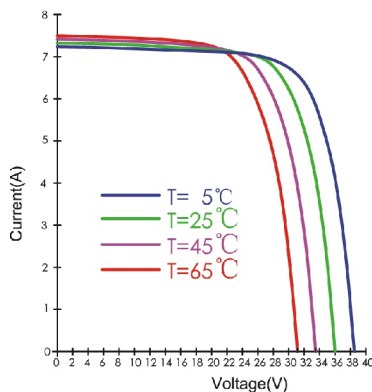
Under Standard Test Conditions (STC) of irradiance of 1000W/m², spectrum AM 1.5 and cell temperature of 25°C

		CS6P-170	CS6P-180	CS6P-190	CS6P-200
Maximum Power	Pmax	170W	180W	190W	200W
Voltage at Maximum Power	Vmp	28.7V	28.7V	28.8V	28.9V
Current at Maximum Power	Imp	5.93A	6.26A	6.60A	6.93A
Open Circuit Voltage	Voc	35.8V	35.9V	36.0V	36.2V
Short Circuit Current	Isc	6.62A	6.98A	7.33A	7.68A
Maximum System Voltage		600V (UL)/1000V (IEC)			
Maximum fuse rating		15A			
Maximum load rating		5400Pa(112.78 lbf/ft ²)			
Temperature Coefficient	Voltage (Voc)	-0.35 %/°C			
	Current (Isc)	0.060 %/°C			
	Max Power(Pmax)	-0.45 %/°C			

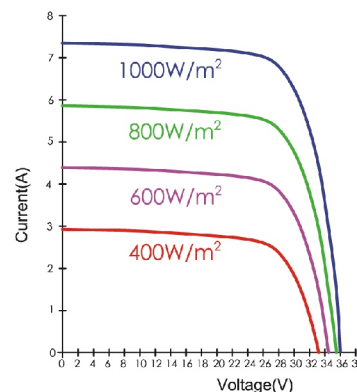
*NOCT (Normal Operating Cell Temperature): 45°C

**Module power tolerance: ±5W (approx. ±2.5%)

I-V Curves Under Different Temperatures, 1000W/m²



I-V Curves Under Different Irradiances ; AM 1.5 ; 25°C



*Specifications included in this datasheet are subject to change without prior notice.

Corporate Headquarters

675 Cochrane Drive, East Tower 6th Floor
Markham, ON, Canada L3R 0B8
Tel: +1 (905) 530-2334 / Fax: +1 (905) 530-2001
E-mail: inquire@csisolar.com
Web: www.csisolar.com

European Office

Mozartstrasse 1, 87727 Babenhausen, Germany
Tel: +49(0)8333-92328-0
Fax: +49(0)8333-92328-11
E-mail: inquire-europe@csisolar.com

US Office

Suite 140, 12657 Alcosta Blvd.
San Ramon, CA 94583, USA
Tel: +1 (925) 866-2700
Fax: +1 (925) 866-2704
E-mail: inquire@csisolar.com